

Size A	Part No.*	Across Flats B Max. Min.	Thickness C Max. Min.	Wrench Height Min.	Bearing Dia. Min.	Proof Load Min. N	1 st Install Max. Nm	1 st Removal Min. Nm	5 th Removal Min. Nm	Weight /1000 Lb.	Carton Qty.
M5x0.8	.5CFHC1#/3	8 7.78	4 3.7	2.96	6.8	14,800	2.1	0.35	0.24	2.71	14,000
M6x1	.6CFHC1#/3	10 9.78	5 4.7	3.76	8.8	20,900	4.	0.55	0.4	5.51	7,000
M8x1.25	.8CFHC1#/3	13	6.5	4.91	11.3	38,100	8	1.15	0.8	11.5	3,400
M8x 1	.8FFHC1#/3	12.73	6.14			43,100					
M10x1.5	.10CFHC1#/3	17 16.73	8 7.64	6.11	15.3	60,300	14	2	1.4	25.6	1,500
M10x1.25	.10FFHC1#/3					67,300					
M10x1	.10XFHC1#/3					71,000					
M12x1.75	.12CFHC1#/3	19 18.67	10 9.64	7.71	17.2	88,500	21	3.1	2.1	38.1	1,000
M12x1.5	.12FFHC1#/3					97,800					
M12x1.25	.12XFHC1#/3					102,200					
M14x2	.14CFHC1#/3	22	11	8.24	20.2	120,800	31	4.4	3	55.1	700
M14x1.5	.14FFHC1#/3	21.67	10.3			138,700					
M16x2	.16CFHC1#/3	24	13	9.84	22.2	164,900	42	6	4.2	73.4	500
M16x1.5	.16FFHC1#/3	23.67	12.3			185,400					
M18x2.5	.18CFHC1#/3	27 26.16	15 14.3	11.44	25.3	203,000	56	8	5.5	109	350
M18x2	.18FFHC1#/3					224,400					
M18x1.5	.18XFHC1#/3					236,500					

*Coating Codes (substitute for "#" in the part number). Other available finishes may not be listed.

- [blank] – Unfinished Plain
- 1 – Zinc/Yellow per ASTM F1941 - Fe/Zn 5C
- 2 – Zinc/Clear per ASTM F1941 - Fe/Zn 5AT (RoHS)
- 3 – Cadmium/Clear per ASTM F1941 - Fe/Cd 5A
- 4 – Phosphate/Oil per ASTM F 1137 Grade D
- C – Commercial Cadmium/Clear
- Y – Commercial Zinc/Yellow
- Z – Commercial Zinc/Clear (RoHS)

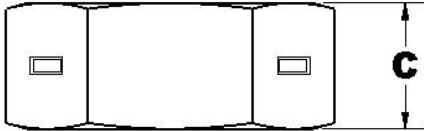
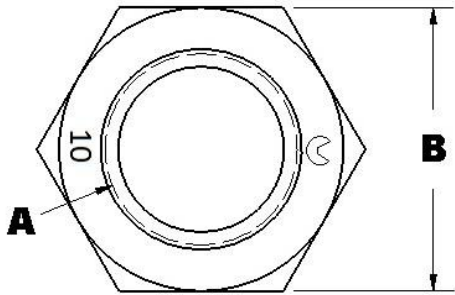
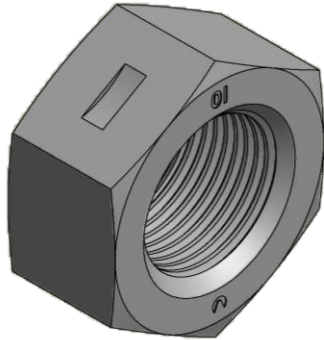
M20 and larger see page 2

DIN 934 is superseded by ISO 4032, ISO 8673, and ISO 8674

- Notes:
- Dimensions per DIN 934 plus a locking feature
 - Threads as specified per DIN 13 part 12 and 15 prior to deflection
 - Prevailing torque and Material per DIN 267 part 15
 - Parts listed are not all stocked – contact Aztech sales for lead times
 - Latest specifications were used on the date of print release

REVERSIBLE (CENTER) LOCKNUTS FROM DIN 934 CLASS 10

	Date	By	Scale	Units	Type	Rev.
	10-7-2014	SEK	None	mm	S	A



Size A	Part No.*	Across Flats B Max. Min.	Thickness C Max. Min.	Wrench Height Min.	Bearing Dia. Min.	Proof Load Min. N	1 st Install Max. Nm	1 st Removal Min. Nm	5 th Remov al Min. Nm	Weight /1000 Lb.	Carton Qty.
M18 and smaller see page 1											
M20x2.5	.20CFHC1#/3	30 29.16	16 14.9	11.92	28.2	259,700	72	10.5	7	142	275
M20x2	.20FFHC1#/3					283,800					
M20x1.5	.20XFHC1#/3					299,200					
M22x2.5	.22CFHC1#/3	32 31	18 16.9	13.52	29.5	321,200	90	13	9	174	225
M22x2	.22FFHC1#/3					349,800					
M22x1.5	.22XFHC1#/3					366,300					
M24x3	.24CFHC1#/3	36 35	19 17.7	14.16	33.2	374,200	106	15	10.5	243	150
M24x2	.24FFHC1#/3					422,400					
M27x3	.27CFHC1#/3	41 40	22 20.7	16.56	38	486,500	123	17	12	364	100
M27x2	.27FFHC1#/3					534,600					
M30x3.5	.30CFHC1#/3	46 45	24 22.7	18.16	42.7	594,700	140	19	14	492	80
M30x2	.30FFHC1#/3					683,100					
M33x3.5	.33CFHC1#/3	50 49	26 24.7	19.76	46.6	735,600	160	21.5	16.5	635	60
M33x2	.33FFHC1#/3					837,100					
M36x4	.36CFHC1#/3	55 53.8	29 27.4	21.92	51.1	866,000	180	24	17.5	866	40
M36x3	.36FFHC1#/3					1,021,000					
M39x4	.39CFHC1#/3	60 58.8	31 29.4	23.52	55.9	1,035,000	200	26.5	19.5	1,110	35
M39x3	.39FFHC1#/3					1,215,000					

*Coating Codes (substitute for “#” in the part number).
Other available finishes may not be listed.

- [blank] – Unfinished Plain
- 1 – Zinc/Yellow per ASTM F1941 - Fe/Zn 5C
- 2 – Zinc/Clear per ASTM F1941 - Fe/Zn 5AT (RoHS)
- 3 – Cadmium/Clear per ASTM F1941 - Fe/Cd 5A
- 4 – Phosphate/Oil per ASTM F 1137 Grade D
- C – Commercial Cadmium/Clear
- Y – Commercial Zinc/Yellow
- Z – Commercial Zinc/Clear (RoHS)

DIN 934 is superseded by ISO 4032, ISO 8673, and ISO 8674

- Notes:
1. Dimensions per DIN 934 plus a locking feature
 2. Threads as specified per DIN 13 part 12 and 15 prior to deflection
 3. Prevailing torque and Material per DIN 267 part 15
 4. Parts listed are not all stocked – contact Aztech sales for lead times
 5. Latest specifications were used on the date of print release

REVERSIBLE (CENTER) LOCKNUTS FROM DIN 934 CLASS 10

	Date	By	Scale	Units	Type	Rev.
	10-7-2014	SEK	None	mm	S	A