

Size <b>A</b>	Part No.*	Across Flats <b>B</b> Max. Min.	Thickness <b>C</b> Max. Min.	Wrench Height Min.	Bearing Dia. Min.	Proof Load Min. N	1 <sup>st</sup> Install Max. Nm	1 <sup>st</sup> Removal Min. Nm	5 <sup>th</sup> Removal Min. Nm	Weight /1000 Lb.	Carton Qty.
M5x0.8	.5CFHC8#/3	8 7.78	4 3.7	2.96	6.8	11,500	1.6	0.29	0.2	2.71	14,000
M6x1	.6CFHC8#/3	10 9.78	5 4.7	3.76	8.8	16,300	3	0.45	0.3	5.51	7,000
M8x1.25	.8CFHC8#/3	13	6.5	4.91	11.3	30,400	6	0.85	0.6	11.5	3,400
M8x 1	.8FFHC8#/3	12.73	6.14			40,800					
M10x1.5	.10CFHC8#/3	17 16.73	8 7.64	6.11	15.3	48,100	10.5	1.5	1	25.6	1,500
M10x1.25	.10FFHC8#/3					63,600					
M10x1	.10XFHC8#/3					67,100					
M12x1.75	.12CFHC8#/3	19 18.67	10 9.64	7.71	17.2	70,800	15.5	2.3	1.6	38.1	1,000
M12x1.5	.12FFHC8#/3					92,500					
M12x1.25	.12XFHC8#/3					96,700					
M14x2	.14CFHC8#/3	22	11	8.24	20.2	96,000	24	3.3	2.3	55.1	700
M14x1.5	.14FFHC8#/3	21.67	10.3			131,200					
M16x2	.16CFHC8#/3	24	13	9.84	22.2	131,900	32	4.5	3	73.4	500
M16x1.5	.16FFHC8#/3	23.67	12.3			175,300					
M18x2.5	.18CFHC8#/3	27 26.16	15 14.3	11.44	25.3	176,600	42	6	4.2	109	350
M18x2	.18FFHC8#/3					210,100					
M18x1.5	.18XFHC8#/3					221,500					

\*Coating Codes (substitute for "#" in the part number).  
Other available finishes may not be listed.

- [blank] – Unfinished Plain
- 1 – Zinc/Yellow per ASTM F1941 - Fe/Zn 5C
- 2 – Zinc/Clear per ASTM F1941 - Fe/Zn 5AT (RoHS)
- 3 – Cadmium/Clear per ASTM F1941 - Fe/Cd 5A
- 4 – Phosphate/Oil per ASTM F 1137 Grade D
- C – Commercial Cadmium/Clear
- Y – Commercial Zinc/Yellow
- Z – Commercial Zinc/Clear (RoHS)

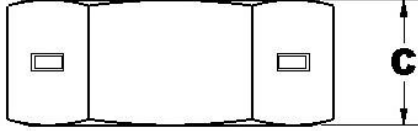
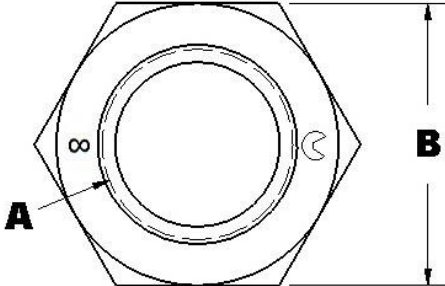
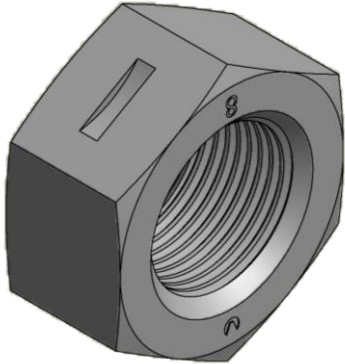
M20 and larger see page 2

DIN 934 is superseded by ISO 4032, ISO 8673, and ISO 8674

- Notes:
1. Dimensions per DIN 934 plus a locking feature
  2. Threads as specified per DIN 13 part 12 and 15 prior to deflection
  3. Prevailing torque and Material per DIN 267 part 15
  4. Parts listed are not all stocked – contact Aztech sales for lead times
  5. Latest specifications were used on the date of print release

## REVERSIBLE (CENTER) LOCKNUTS FROM DIN 934 CLASS 8

	Date	By	Scale	Units	Type	Rev.
	10-7-2014	SEK	None	mm	S	A



Size <b>A</b>	Part No.*	Across Flats <b>B</b> Max. Min.	Thickness <b>C</b> Max. Min.	Wrench Height Min.	Bearing Dia. Min.	Proof Load Min. N	1 <sup>st</sup> Install Max. Nm	1 <sup>st</sup> Removal Min. Nm	5 <sup>th</sup> Removal Min. Nm	Weight /1000 Lb.	Carton Qty.
M18 and smaller see page 1											
M20x2.5	.20CFHC8#/3	30 29.16	16 14.9	11.92	28.2	225,400	54	7.5	5.3	142	275
M20x2	.20FFHC8#/3					265,700					
M20x1.5	.20XFHC8#/3					280,200					
M22x2.5	.22CFHC8#/3	32 31	18 16.9	13.52	29.5	278,800	68	9.5	6.5	174	225
M22x2	.22FFHC8#/3					327,500					
M22x1.5	.22XFHC8#/3					343,000					
M24x3	.24CFHC8#/3	36 35	19 17.7	14.16	33.2	324,800	80	11.5	8	243	150
M24x2	.24FFHC8#/3					395,500					
M27x3	.27CFHC8#/3	41 40	22 20.7	16.56	38	422,300	94	13.5	10	364	100
M27x2	.27FFHC8#/3					510,900					
M30x3.5	.30CFHC8#/3	46 45	24 22.7	18.16	42.7	516,100	108	16	12	492	80
M30x2	.30FFHC8#/3					639,600					
M33x3.5	.33CFHC8#/3	50 49	26 24.7	19.76	46.6	638,500	122	18	14	635	60
M33x2	.33FFHC8#/3					783,800					
M36x4	.36CFHC8#/3	55 53.8	29 27.4	21.92	51.1	751,600	136	21	16	866	40
M36x3	.36FFHC8#/3					942,800					
M39x4	.39CFHC8#/3	60 58.8	31 29.4	23.52	55.9	897,900	150	23	18	1,110	35
M39x3	.39FFHC8#/3					1,123,000					

DIN 934 is superseded by ISO 4032, ISO 8673, and ISO 8674

\*Coating Codes (substitute for "#" in the part number).  
Other available finishes may not be listed.

- [blank] – Unfinished Plain
- 1 – Zinc/Yellow per ASTM F1941 - Fe/Zn 5C
- 2 – Zinc/Clear per ASTM F1941 - Fe/Zn 5AT (RoHS)
- 3 – Cadmium/Clear per ASTM F1941 - Fe/Cd 5A
- 4 – Phosphate/Oil per ASTM F 1137 Grade D
- C – Commercial Cadmium/Clear
- Y – Commercial Zinc/Yellow
- Z – Commercial Zinc/Clear (RoHS)

- Notes:
1. Dimensions per DIN 934 plus a locking feature
  2. Threads as specified per DIN 13 part 12 and 15 prior to deflection
  3. Prevailing torque and Material per DIN 267 part 15
  4. Parts listed are not all stocked – contact Aztech sales for lead times
  5. Latest specifications were used on the date of print release

## REVERSIBLE (CENTER) LOCKNUTS FROM DIN 934 CLASS 8

Date	By	Scale	Units	Type	Rev.
10-7-2014	SEK	None	mm	S	A