

Size A	Part No.*	Across Flats B Max. Min.	Thickness C Max. Min.	Wrench Height Min.	Bearing Dia. Min.	Proof Load Min. N	Weight /1000 Lb.	Carton Qty.
M5x0.8	.5CFHN1#/3	8 7.78	4 3.7	2.96	6.8	14,800	2.71	14,000
M6x1	.6CFHN1#/3	10 9.78	5 4.7	3.76	8.8	20,900	5.51	7,000
M8x1.25	.8CFHN1#/3	13 12.73	6.5 6.14	4.91	11.3	38,100	11.5	3,400
M8x 1	.8FFHN1#/3					43,100		
M10x1.5	.10CFHN1#/3	17 16.73	8 7.64	6.11	15.3	60,300	25.6	1,500
M10x1.25	.10FFHN1#/3					67,300		
M10x1	.10XFHN1#/3					71,000		
M12x1.75	.12CFHN1#/3	19 18.67	10 9.64	7.71	17.2	88,500	38.1	1,000
M12x1.5	.12FFHN1#/3					97,800		
M12x1.25	.12XFHN1#/3					102,200		
M14x2	.14CFHN1#/3	22 21.67	11 10.3	8.24	20.2	120,800	55.1	700
M14x1.5	.14FFHN1#/3					138,700		
M16x2	.16CFHN1#/3	24 23.67	13 12.3	9.84	22.2	164,900	73.4	500
M16x1.5	.16FFHN1#/3					185,400		
M18x2.5	.18CFHN1#/3	27 26.16	15 14.3	11.44	25.3	203,000	109	350
M18x2	.18FFHN1#/3					224,400		
M18x1.5	.18XFHN1#/3					236,500		

*Coating Codes (substitute for "#" in the part number). Other available finishes may not be listed.

- [blank] – Unfinished Plain
- 1 – Zinc/Yellow per ASTM F1941 - Fe/Zn 5C
- 2 – Zinc/Clear per ASTM F1941 - Fe/Zn 5AT (RoHS)
- 3 – Cadmium/Clear per ASTM F1941 - Fe/Cd 5A
- 4 – Phosphate/Oil per ASTM F 1137 Grade D
- C – Commercial Cadmium/Clear
- Y – Commercial Zinc/Yellow
- Z – Commercial Zinc/Clear (RoHS)

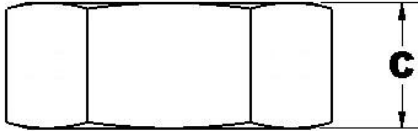
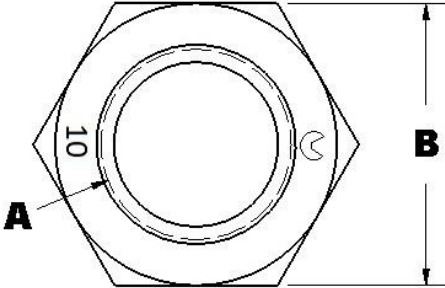
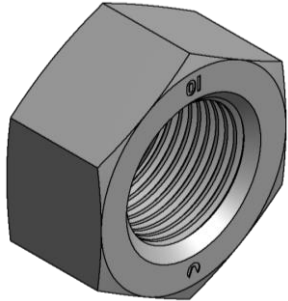
M20 and larger see page 2

DIN 934 is superseded by ISO 4032, ISO 8673, and ISO 8674

- Notes:
1. Dimensions per DIN 934
 2. Threads as specified per DIN 13 part 12 and 15
 3. Material per DIN 267 part 15
 4. Parts listed are not all stocked – contact Aztech sales for lead times
 5. Latest specifications were used on the date of print release

FULL HEX TYPE DIN 934 CLASS 10

	Date	By	Scale	Units	Type	Rev.
	10-16-2014	SEK	None	mm	S	A



Size A	Part No.*	Across Flats B Max. Min.	Thickness C Max. Min.	Wrench Height Min.	Bearing Dia. Min.	Proof Load Min. N	Weight /1000 Lb.	Carton Qty.
M18 and smaller see page 1								
M20x2.5	.20CFHN1#/3	30 29.16	16 14.9	11.92	28.2	259,700	142	275
M20x2	.20FFHN1#/3					283,800		
M20x1.5	.20XFHN1#/3					299,200		
M22x2.5	.22CFHN1#/3	32 31	18 16.9	13.52	29.5	321,200	174	225
M22x2	.22FFHN1#/3					349,800		
M22x1.5	.22XFHN1#/3					366,300		
M24x3	.24CFHN1#/3	36 35	19 17.7	14.16	33.2	374,200	243	150
M24x2	.24FFHN1#/3					422,400		
M27x3	.27CFHN1#/3	41 40	22 20.7	16.56	38	486,500	364	100
M27x2	.27FFHN1#/3					534,600		
M30x3.5	.30CFHN1#/3	46 45	24 22.7	18.16	42.7	594,700	492	80
M30x2	.30FFHN1#/3					683,100		
M33x3.5	.33CFHN1#/3	50 49	26 24.7	19.76	46.6	735,600	635	60
M33x2	.33FFHN1#/3					837,100		
M36x4	.36CFHN1#/3	55 53.8	29 27.4	21.92	51.1	866,000	866	40
M36x3	.36FFHN1#/3					1,021,000		
M39x4	.39CFHN1#/3	60 58.8	31 29.4	23.52	55.9	1,035,000	1,110	35
M39x3	.39FFHN1#/3					1,215,000		

*Coating Codes (substitute for “#” in the part number).
Other available finishes may not be listed.

- [blank] – Unfinished Plain
- 1 – Zinc/Yellow per ASTM F1941- Fe/Zn 5C
- 2 – Zinc/Clear per ASTM F1941 - Fe/Zn 5AT (RoHS)
- 3 – Cadmium/Clear per ASTM F1941 - Fe/Cd 5A
- 4 – Phosphate/Oil per ASTM F 1137 Grade D
- C – Commercial Cadmium/Clear
- Y – Commercial Zinc/Yellow
- Z – Commercial Zinc/Clear (RoHS)

- Notes:
1. Dimensions per DIN 934
 2. Threads as specified per DIN 13 part 12 and 15
 3. Material per DIN 267 part 15
 4. Parts listed are not all stocked – contact Aztech sales for lead times
 5. Latest specifications were used on the date of print release

FULL HEX TYPE DIN 934 CLASS 10



Date	By	Scale	Units	Type	Rev.
10-16-2014	SEK	None	mm	S	A