

Size <b>A</b>	Part No.*	Across Flats <b>B</b> Max. Min.	Thickness <b>C</b> Max. Min.	Bearing Dia. Min.	Proof Load Min. N	1 <sup>st</sup> Install Max. Nm	1 <sup>st</sup> Removal Min. Nm	5 <sup>th</sup> Removal Min. Nm	Weight /1000 Lb.	Carton Qty.																		
M27x3	.27CFRO1#	41	22	38	Customer Defined				363																			
M27x2	.27FFRO1#	40	20.7																									
M30x3.5	.30CFRO1#	46	24	42.7								491																
M30x2	.30FFRO1#	45	22.7																									
M33x3.5	.33CFRO1#	50	26	46.6											634													
M33x2	.33FFRO1#	49	24.7																									
M36x4	.36CFRO1#	55	29	51.1														866										
M36x3	.36FFRO1#	53.8	27.4																									
M39x4	.39CFRO1#	60	31	55.9																	1,110							
M39x3	.39FFRO1#	58.8	29.4																									
M42x4.5	.42CFRO1#	65	34	60.6																				1,440				
M42x3	.42FFRO1#	63.1	32.4																									
M45x4.5	.45CFRO1#	70	36	64.7																							1,760	
M45x3	.45FFRO1#	68.1	34.4																									
M48x5	.45CFRO1#	75	38	69.4																								
M48x3	.45FFRO1#	73.1	36.4																									
M52x5	.52CFRO1#	80	42	74.2				2,690																				
M52x3	.52FFRO1#	78.1	40.4																									
M56x5.5	.56CFRO1#	85	45	78.7							3,130																	
M56x4	.56FFRO1#	82.8	43.4																									

\*Coating Codes (substitute for "#" in the part number).  
Other available finishes may not be listed.

[blank] – Unfinished Plain

- 1 – Zinc/Yellow per ASTM F1941 - Fe/Zn 5C
- 2 – Zinc/Clear per ASTM F1941 - Fe/Zn 5AT (RoHS)
- 3 – Cadmium/Clear per ASTM F1941 - Fe/Cd 5A
- 4 – Phosphate/Oil per ASTM F 1137 Grade D
- C – Commercial Cadmium/Clear
- Y – Commercial Zinc/Yellow
- Z – Commercial Zinc/Clear

M60 and larger see page 2

DIN 934 is superseded by ISO 4032, ISO 8673, and ISO 8674

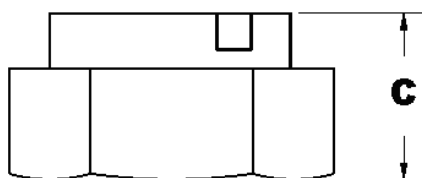
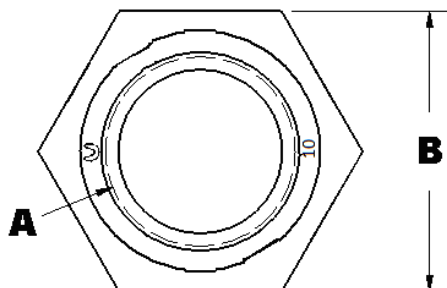
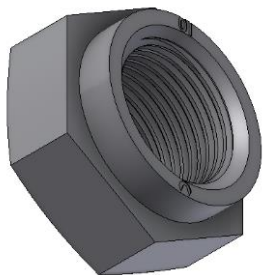
**Notes:**

1. These items are compliant to all requirements per DIN 934
2. Parts listed are not all stocked – contact Aztech sales for lead times
3. Latest specifications were used on the date of print release

## COLLAR LOCKNUTS FROM DIN 934 CLASS 10



Date	By	Scale	Units	Type	Rev.
8-15-14	SEK	None	mm	S	A



Size <b>A</b>	Part No.*	Across Flats <b>B</b> Max. Min.	Thickness <b>C</b> Max. Min.	Bearing Dia. Min.	Proof Load Min. N	1 <sup>st</sup> Install Max. Nm	1 <sup>st</sup> Removal Min. Nm	5 <sup>th</sup> Removal Min. Nm	Weight /1000 Lb.	Carton Qty.
M56 and smaller see page 1										
M60x5.5	.60CFRO1#	90	48	83.4	Customer Defined				3,730	
M60x4	.60FFRO1#	87.8	46.4	83.4						
M64x6	.64CFRO1#	95	51	88.2						
M64x4	.64FFRO1#	92.8	49.1	88.2						
M68x6	.68CFRO1#	100	54	92.9						
M68x4	.68FFRO1#	97.8	52.1	92.9						
M72x6	.72CFRO1#	105	58	97.7						
M72x4	.72FFRO1#	102.8	56.1	97.7						
M76x6	.76CFRO1#	110	61	102.4						
M76x4	.76FFRO1#	107.8	59.1	102.4						
M80x6	.80CFRO1#	115	64	107.2						
M80x4	.80FFRO1#	112.8	62.1	107.2						
M85x6	.85CFRO1#	120	68	111.9						
M85x4	.85FFRO1#	117.8	66.1	111.9						
M90x6	.90CFRO1#	130	72	121.1						
M90x4	.90FFRO1#	127.5	70.1	121.1						
M100x6	.100CFRO1#	145	80	135.4						
M100x4	.100FFRO1#	142.5	78.1	135.4						

\*Coating Codes (substitute for "#" in the part number).  
Other available finishes may not be listed.

[blank] – Unfinished Plain

- 1 – Zinc/Yellow per ASTM F1941- Fe/Zn 5C
- 2 – Zinc/Clear per ASTM F1941 - Fe/Zn 5AT (RoHS)
- 3 – Cadmium/Clear per ASTM F1941 - Fe/Cd 5A
- 4 – Phosphate/Oil per ASTM F 1137 Grade D
- C – Commercial Cadmium/Clear
- Y – Commercial Zinc/Yellow
- Z – Commercial Zinc/Clear

DIN 934 is superseded by ISO 4032, ISO 8673, and ISO 8674

**Notes:**

1. These items are compliant to all requirements per DIN 934
2. Parts listed are not all stocked – contact Aztech sales for lead times
3. Latest specifications were used on the date of print release

## COLLAR LOCKNUTS FROM DIN 934 CLASS 10



Date	By	Scale	Units	Type	Rev.
10-14-14	SEK	None	mm	S	A