

Size <b>A</b>	Part No.*	Across Flats <b>B</b> Max. Min.	Thickness <b>C</b>		Bearing Dia. Min.	Proof Load Min. N	1 <sup>st</sup> Install Max. Nm	1 <sup>st</sup> Removal Min. Nm	5 <sup>th</sup> Removal Min. Nm	Weight /1000 Lb.	Carton Qty.
			Max.	Min.							
M27x3	.27CFRO8#	41	22		Customer Defined						
M27x2	.27FFRO8#	40	20.7								
M30x3.5	.30CFRO8#	46	24	38							
M30x2	.30FFRO8#	45	22.7	42.7							
M33x3.5	.33CFRO8#	50	26	46.6							
M33x2	.33FFRO8#	49	24.7	51.1							
M36x4	.36CFRO8#	55	29	55.9							
M36x3	.36FFRO8#	53.8	27.4	60.6							
M39x4	.39CFRO8#	60	31	64.7							
M39x3	.39FFRO8#	58.8	29.4	69.4							
M42x4.5	.42CFRO8#	65	34	74.2							
M42x3	.42FFRO8#	63.1	32.4	78.7							
M45x3	.45CFRO8#	70	3								
M45x4.5	.45FFRO8#	68.1	34.4								
M48x5	.45CFRO8#	75	3								
M48x3	.45FFRO8#	73.1	36.4								
M52x5	.52CFRO8#	80	42								
M52x3	.52FFRO8#	78.1	40.4								
M56x5.5	.56CFRO8#	85	45								
M56x4	.56FFRO8#	82.8	43.4								

\*Coating Codes (substitute for “#” in the part number).  
Other available finishes may not be listed.

- [blank] – Unfinished Plain
- 1 – Zinc/Yellow per ASTM F1941 - Fe/Zn 5C
- 2 – Zinc/Clear per ASTM F1941 - Fe/Zn 5AT (RoHS)
- 3 – Cadmium/Clear per ASTM F1941 - Fe/Cd 5A
- 4 – Phosphate/Oil per ASTM F 1137 Grade D
- C – Commercial Cadmium/Clear
- Y – Commercial Zinc/Yellow
- Z – Commercial Zinc/Clear

M60 and larger see page 2

DIN 934 is superseded by ISO 4032, ISO 8673, and ISO 8674

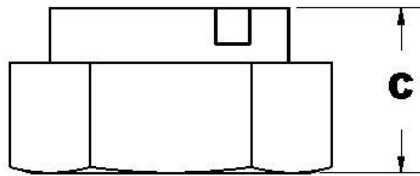
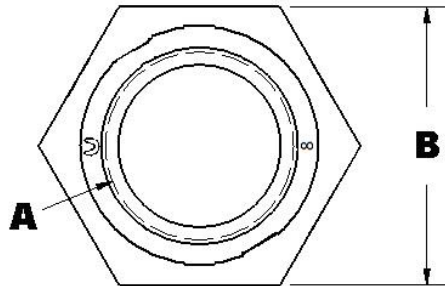
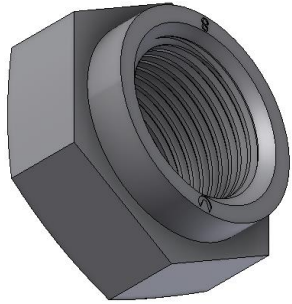
Notes:

1. These items are compliant to all requirements per DIN 934 with lock
2. Parts listed are not all stocked – contact Aztech sales for lead times
3. Latest specifications were used on the date of print release

## COLLAR LOCKNUTS FROM DIN 934 CLASS 8



Date	By	Scale	Units	Type	Rev.
10-16-14	SEK	None	mm	S	A



Size <b>A</b>	Part No.*	Across Flats <b>B</b>		Thickness <b>C</b>		Bearing Dia. Min.	Proof Load Min. N	1 <sup>st</sup> Install Max. Nm	1 <sup>st</sup> Removal Min. Nm	5 <sup>th</sup> Removal Min. Nm	Weight /1000 Lb.	Carton Qty.	
		Max.	Min.	Max.	Min.								
M56 and smaller see page 1													
M60x5.5	.60CFRO8#	90	48	Customer Defined							3,730		
M60x4	.60FFRO8#	87.8	46.4								83.4	4,370	
M64x6	.64CFRO8#	95	51								88.2	5,070	
M64x4	.64FFRO8#	92.8	49.1								92.9	5,890	
M68x6	.68CFRO8#	100	54								97.7	6,700	
M68x4	.68FFRO8#	97.8	52.1								102.4	7,580	
M72x6	.72CFRO8#	105	58								107.2	8,660	
M72x4	.72FFRO8#	102.8	56.1								111.9	10,870	
M76x6	.76CFRO8#	110	61								121.1	15,040	
M76x4	.76FFRO8#	107.8	59.1								127.5		
M80x6	.80CFRO8#	115	64								142.5		
M80x4	.80FFRO8#	112.8	62.1										
M85x6	.85CFRO8#	120	68										
M85x4	.85FFRO8#	117.8	66.1										
M90x6	.90CFRO8#	130	72										
M90x4	.90FFRO8#	127.5	70.1										
M100x6	.100CFRO8#	145	80										
M100x4	.100FFRO8#	142.5	78.1										
DIN 934 is superseded by ISO 4032, ISO 8673, and ISO 8674													

\*Coating Codes (substitute for "#" in the part number).  
Other available finishes may not be listed.

- [blank] – Unfinished Plain
- 1 – Zinc/Yellow per ASTM F1941 - Fe/Zn 5C
- 2 – Zinc/Clear per ASTM F1941 - Fe/Zn 5AT (RoHS)
- 3 – Cadmium/Clear per ASTM F1941 - Fe/Cd 5A
- 4 – Phosphate/Oil per ASTM F 1137 Grade D
- C – Commercial Cadmium/Clear
- Y – Commercial Zinc/Yellow
- Z – Commercial Zinc/Clear 9

- Notes:
- These items are compliant to all requirements per DIN 934 with lock
  - Parts listed are not all stocked – contact Aztech sales for lead times
  - Latest specifications were used on the date of print release

## COLLAR LOCKNUTS FROM DIN 934 CLASS 8



Date	By	Scale	Units	Type	Rev.
10-16-14	SEK	None	mm	S	A