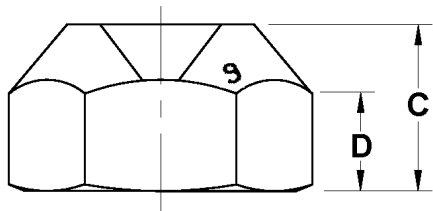
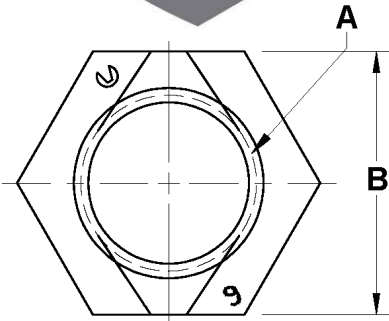


Drawing No. CALN9



Size A	Part No.*	Across Flats B Max. Min.	Thickness C Max. Min.	Wrench Height D Min.	Bearing Dia. Min.	Proof Load Min. N	1 st Install Max. Nm	1 st Removal Min. Nm	5 th Removal Min. Nm	Weight /1000 Lb.	Carton Qty.
M5x0.8	.5CALN9#	8 7.78	5.3 4.8	2.7	6.9	13,000	1.6	.29	.2	3.60	11,000
M6x1	.6CALN9#	10 9.78	6.7 5.4	3	8.9	18,400	3	.45	.3	5.45	7,000
M8x1.25	.8CALN9#	13 12.73	8 7.14	4.3	11.6	34,400	6	.85	.6	12.2	3,200
M10x1.5*	.10CALN9#	15 14.73	11.2 9.6	6.2	13.6	54,500	10.5	1.5	1	23.8	1,500
M10x1.5	.10CALX9#	16 15.73	10.5 8.94	5.6	14.6	54,500	10.5	1.5	1	36	1,100
M12x1.75	.12CALN9#	18 17.73	13.3 11.57	7.7	16.6	80,100	15.5	2.3	1.6	30.6	950
M14x2	.14CALN9#	21 20.67	15.4 13.4	8.9	19.6	109,000	24	3.3	2.3	52.7	750
M16x2	.16CALN9#	24 23.67	17.9 15.7	10.5	22.5	149,000	32	4.5	3	79.0	500
M20x2.5	.20CALN9#	30 29.16	21.8 19	12.7	27.7	225,000	54	7.5	5.3	138	250
M24x3	.24CALN9#	36 35	26.4 22.6	15.1	33.2	325,000	80	11.5	8	316	125
M30x3.5	.30CALN9#	46 45	31.8 27.3	18.2	42.7	516,000	108	16	12	464	85
M36x4	.36CALN9#	55 53.8	38.5 33.1	22.1	51.1	752,000	136	21	16	607	65

*M10 must be specifically requested as 15 mm width across flats to be quoted

*Coating Codes (substitute for "#" in the part number).
Other available finishes may not be listed.

- [blank] – Unfinished Plain
- 1 – Zinc/Yellow per ASTM F1941 - Fe/Zn 5C
- 2 – Zinc/Clear per ASTM F1941 - Fe/Zn 5AT (RoHS)
- 3 – Cadmium/Clear per ASTM F1941 - Fe/Cd 5A
- 4 – Phosphate/Oil per ASTM F 1137 Grade D
- C – Commercial Cadmium/Clear
- Y – Commercial Zinc/Yellow
- Z – Commercial Zinc/Clear (RoHS)

Notes:

1. These items are compliant to all requirements per ASME B18.16M
2. Threads as specified per ASME B1.13M
3. Parts listed are not all stocked – contact Aztech sales for lead times
4. Latest specifications were used on the date of print release

AUTOMATION LOCKNUTS ASME B18.16M CLASS 9



Date	By	Scale	Units	Type	Rev.
9-25-2014	SEK	None	mm	S	A