

Size A	Part No.*	Across Flats B Max. Min.	Thickness C Max. Min.	Wrench Height D Min.	Bearing Dia. Min.	Proof Load Min. N	1 st Install Max. Nm	1 st Removal Min. Nm	5 th Removal Min. Nm	Weight /1000 Lb.	Carton Qty.
M5x0.8	.5CALV1#	8 7.78	5.1 4.8	2.75	6.9	14,800	2.1	0.35	0.24	3.60	11,000
M6x1	.6CALV1#	10 9.78	6 5.7	3.3	8.9	20,900	4	0.55	0.4	5.64	7,000
M8x1.25	.8CALV1#	13	8	4.4	11.6	38,100	8	1.15	0.8	12.3	3,200
M8x 1	.8FALV1#	12.73	7.5			43,100					
M10x1.5	.10CALV1#	17 16.73	10 9	5.5	15.6	60,300	14	2	1.4	26.4	1,500
M10x1.25	.10FALV1#					67,300					
M10x1	.10XALV1#					71,000					
M12x1.75	.12CALV1#	19 18.67	12 11	6.6	17.4	88,500	21	3.1	2.1	38.9	1,000
M12x1.5	.12FALV1#					97,800					
M12x1.25	.12XALV1#					102,200					
M14x2	.14CALV1#	22	14	7.7	20.5	120,800	31	4.4	3	52.7	750
M14x1.5	.14FALV1#	21.67	12			138,700					
M16x2	.16CALV1#	24	16	8.8	22.5	164,900	42	6	4.2	79.0	500
M16x1.5	.16FALV1#	23.67	14			185,400					
M18x2.5	.18CALV1#	27 26.16	18 16	9.9	24.9	203,000	56	8	5.5	137	300
M18x2	.18FALV1#					224,400					
M18x1.5	.18XALV1#					236,500					

*Coating Codes (substitute for "#" in the part number). Other available finishes may not be listed.

- [blank] – Unfinished Plain
- 1 – Zinc/Yellow per ASTM F1941 - Fe/Zn 5C
- 2 – Zinc/Clear per ASTM F1941 - Fe/Zn 5AT (RoHS)
- 3 – Cadmium/Clear per ASTM F1941 - Fe/Cd 5A
- 4 – Phosphate/Oil per ASTM F 1137 Grade D
- C – Commercial Cadmium/Clear
- Y – Commercial Zinc/Yellow
- Z – Commercial Zinc/Clear (RoHS)

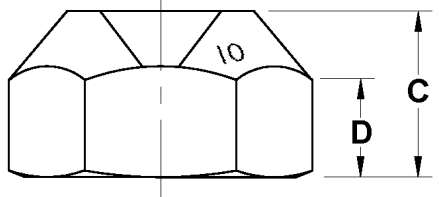
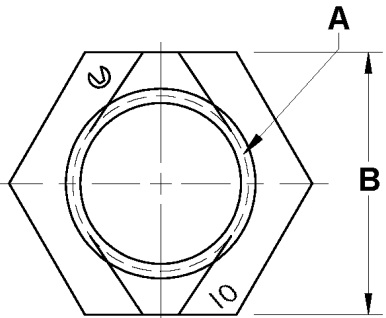
M20 and larger see page 2
 DIN 980 V is superseded by ISO 7042

Notes:
 1. These items are compliant to all requirements per DIN 980 Type V
 2. Material and Mechanical Performance per DIN 267 part 15
 3. Threads as specified per DIN 13 part 12
 4. Parts listed are not all stocked – contact Aztech sales for lead times
 5. Latest specifications were used on the date of print release

AUTOMATION LOCKNUTS

DIN 980 V CLASS 10

	Date	By	Scale	Units	Type	Rev.
	9-12-2014	SEK	None	mm	S	A



Size A	Part No.*	Across Flats B Max. Min.	Thickness C Max. Min.	Wrench Height D Min.	Bearing Dia. Min.	Proof Load Min. N	1 st Install Max. Nm	1 st Removal Min. Nm	5 th Removal Min. Nm	Weight /1000 Lb.	Carton Qty.
M18 and larger see page 1											
M20x2.5	.20CALV1#	30 29.16	20 18	11	27.7	259,700	72	10.5	7	158	250
M20x2	.20FALV1#					283,800					
M20x1.5	.20XALV1#					299,200					
M22x2.5	.22CALV1#	32 31	22 20	12.2	29.5	321,200	90	13	9	225	175
M22x2	.22FALV1#					349,800					
M22x1.5	.22XALV1#					366,300					
M24x3	.24CALV1#	36 35	24 22	13.2	33.2	374,200	106	15	10.5	316	125
M24x2	.24FALV1#					422,400					
M27x3	.27CALV1#	41 40	27 25	14.8	38	486,500	123	17	12	395	100
M27x2	.27FALV1#					534,600					
M30x3.5	.30CALV1#	46 45	30 28	16.5	42.7	594,700	140	19	14	464	85
M30x2	.30FALV1#					683,100					
M33x3.5	.33CALV1#	50 49	33 31	18.2	46.6	735,600	160	21.5	16.5	526	75
M33x2	.33FALV1#					837,100					
M36x4	.36CALV1#	55 53.8	36 34	19.8	51.1	866,000	180	24	17.5	607	65
M36x3	.36FALV1#					1,021,000					
M39x4	.39CALV1#	60 58.8	39 37	21.5	55.9	1,035,000	200	26.5	19.5	658	60
M39x3	.39FALV1#					1,215,000					

*Coating Codes (substitute for "#" in the part number).
Other available finishes may not be listed.

- [blank] – Unfinished Plain
- 1 – Zinc/Yellow per ASTM F1941- Fe/Zn 5C
- 2 – Zinc/Clear per ASTM F1941 - Fe/Zn 5AT (RoHS)
- 3 – Cadmium/Clear per ASTM F1941 - Fe/Cd 5A
- 4 – Phosphate/Oil per ASTM F 1137 Grade D
- C – Commercial Cadmium/Clear
- Y – Commercial Zinc/Yellow
- Z – Commercial Zinc/Clear (RoHS)

- Notes:
1. These items are compliant to all requirements per DIN 980 Type V
 2. Material and Mechanical Performance per DIN 267 part 15
 3. Threads as specified per DIN 13 part 12
 4. Parts listed are not all stocked – contact Aztech sales for lead times
 5. Latest specifications were used on the date of print release

AUTOMATION LOCKNUTS DIN 980 V CLASS 10

	Date	By	Scale	Units	Type	Rev.
	9-12-2014	SEK	None	mm	S	A