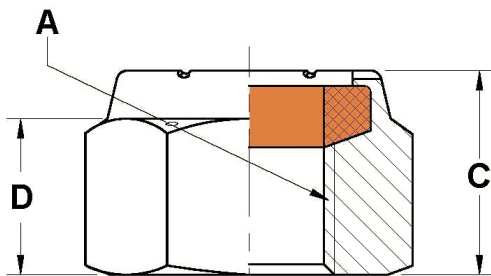
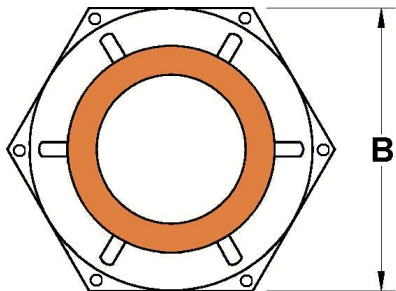
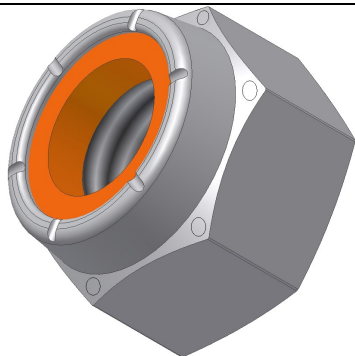


# Drawing No. NU-C



Size <b>A</b>	Part No.*	Across Flats <b>B</b> Max. Min.	Thickness <b>C</b> Max. Min.	Wrench Height <b>D</b> Min.	Bearing Dia. Min.	Proof Load Min. Lbs	1 <sup>st</sup> Install Max. In-lb	1 <sup>st</sup> Removal Min. In-lb	3 <sup>th</sup> Removal Min. In-lb	Weight /1000 Lb.	Carton Qty.
1/4-20	25CNU-C#	0.506	0.390	0.290	0.489	4,750	40	5	1.5	14.1	2,800
1/4-28	25FNU-C#	0.489	0.360			5,450					
5/16-18	31CNU-C#	0.566	0.453	0.335	0.551	7,850	80	8	2.5	20.8	1,900
5/16-24	31FNU-C#	0.551	0.423			8,700					
3/8-16	37CNU-C#	0.691	0.562	0.392	0.675	11,600	110	12	4	23.2	1,700
3/8-24	37FNU-C#	0.675	0.532			13,200					
7/16-14	43CNU-C#	0.754	0.609	0.464	0.736	15,900	135	17	5	35.9	1,100
7/16-20	43FNU-C#	0.736	0.579			17,800					
1/2-13	50CNU-C#	0.879	0.718	0.544	0.861	21,300	204	22	7.5	79	500
1/2-20	50FNU-C#	0.861	0.688			24,000					
9/16-12	56CNU-C#	0.942	0.812	0.655	0.922	27,300	300	30	10	92.9	425
9/16-18	56FNU-C#	0.922	0.782			30,400					
5/8-11	62CNU-C#	1.067	0.874	0.677	1.045	33,900	420	39	12.5	143.6	275
5/8-18	62FNU-C#	1.045	0.844			38,400					
3/4-10	75CNU-C#	1.255	1.015	0.790	1.231	50,100	540	58	20	263.3	150
3/4-16	75FNU-C#	1.231	0.985			56,000					
7/8-9	87CNU-C#	1.444	1.140	0.833	1.417	69,300	840	88	30	359	110
7/8-14	87FNU-C#	1.417	1.110			76,400					
1-8	100CNU-C#	1.632	1.312	1.000	1.602	90,900	1,080	120	40	526.7	75
1-14	100FNU-C#	1.602	1.250			101,900					
1 1/8-7	112CNU-C#	1.820	1.469	1.096	1.788	115,000	1,200	150	50	658.3	60
1 1/8-12	112FNU-C#	1.788	1.407			128,000					
1 1/4-7	125CNU-C#	2.008	1.672	1.250	1.973	145,000	1,320	188	60	987.5	40
1 1/4-12	125FNU-C#	1.973	1.610			161,000					
1 3/8-6	137CNU-C#	2.197	1.828	1.376	2.159	173,000	1,620	220	70	1,316	30
1 3/8-12	137FNU-C#	2.159	1.766			197,000					
1 1/2-6	150CNU-C#	2.384	1.953	1.413	2.344	211,000	1,800	260	90	1,975	20
1 1/2-12	150FNU-C#	2.344	1.891			237,000					

Coating Codes (substitute for “#” in the part number).  
Other available finishes may not be listed.

- [blank] – Unfinished Plain
- 1 – Zinc/Yellow per ASTM F1941 - Fe/Zn 5C
- 2 – Zinc/Clear per ASTM F1941 - Fe/Zn 5AT (RoHS)
- 3 – Cadmium/Clear per ASTM F1941 - Fe/Cd 5A
- 4 – Phosphate/Oil per ASTM F 1137 Grade D
- C – Commercial Cadmium/Clear
- Y – Commercial Zinc/Yellow
- Z – Commercial Zinc/Clear (RoHS)

**Notes:**

1. These items are compliant to all requirements per ASME B18.16.6
2. Threads as specified per ASME B1.1
3. Parts listed are not all stocked – contact Aztech sales for lead times
4. Latest specifications were used on the date of print release

## Heavy Hex Nylon Insert ASME B18.16.6 Grade C



Date	By	Scale	Units	Type	Rev.
10-22-2014	SEK	None	In	S	A